



## QUICK START GUIDE



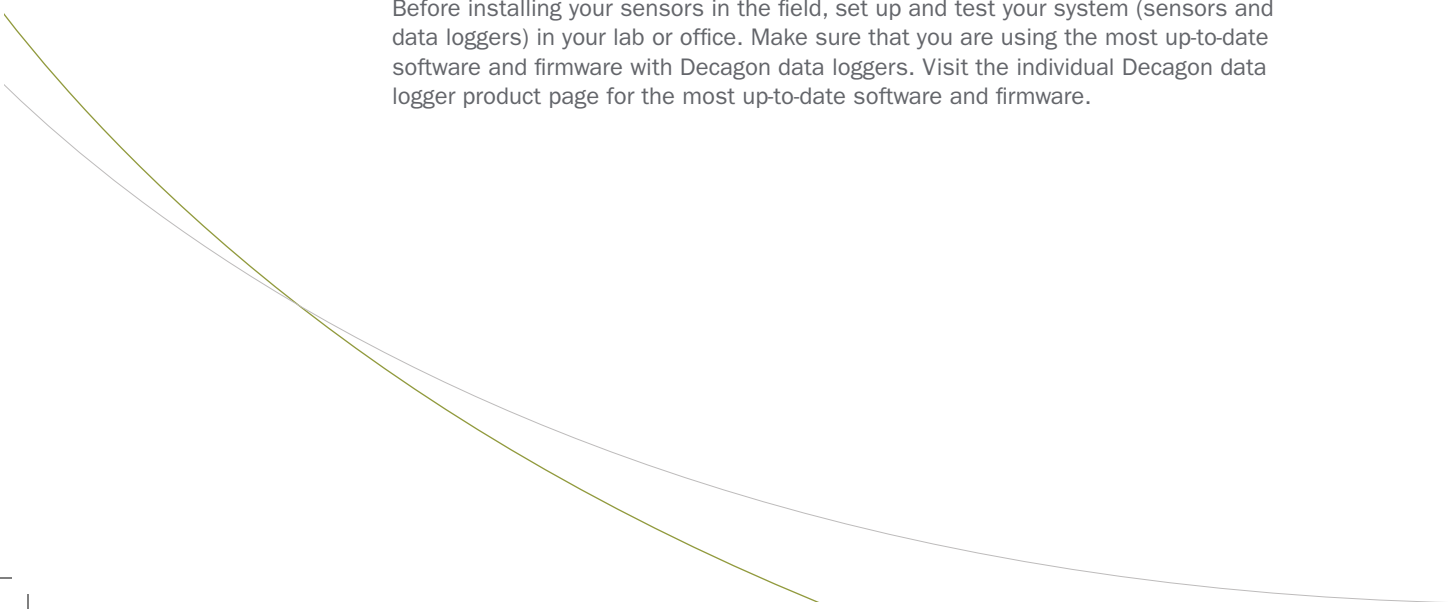
### ENVIRONMENTAL SENSORS

VP-4 | ECT | SRS | LWS | ES-2 | RT-1

## Pre-Installation

---

Before installing your sensors in the field, set up and test your system (sensors and data loggers) in your lab or office. Make sure that you are using the most up-to-date software and firmware with Decagon data loggers. Visit the individual Decagon data logger product page for the most up-to-date software and firmware.



# Sensor Overview

---



## **VP-4**

*Barometric Pressure,  
Humidity, Temperature,  
Vapor Pressure*



## **ECT**

*Air Temperature*



## **SRS**

*Measures NDVI or PRI  
Spectral Vegetation  
Indices*



## **LWS**

*Duration of Leaf Wetness*



## **ES-2**

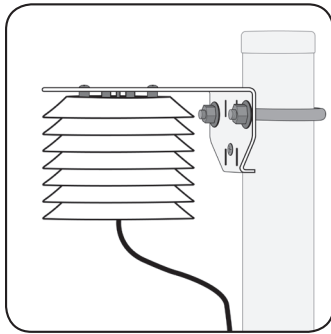
*Electrical Conductivity,  
Temperature*



## **RT-1**

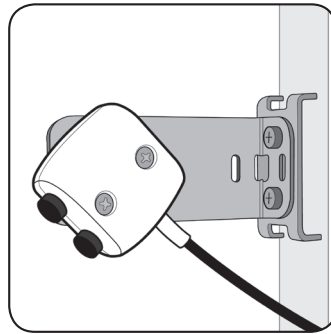
*Rugged Temperature*

# Installing Sensor



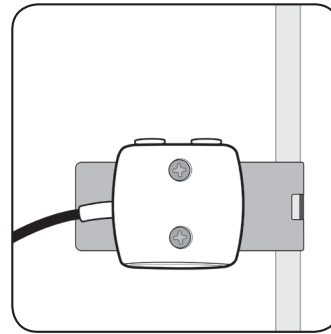
## **ECT / VP-4**

*Securely mount and level the sensor as necessary.*



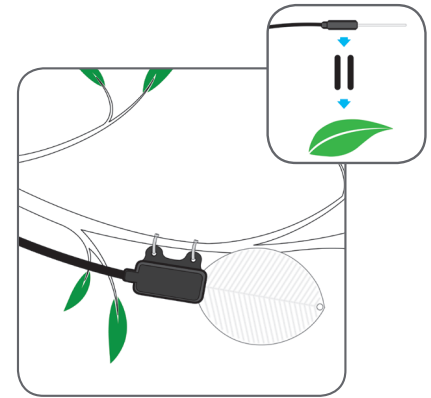
## **SRS Field Stop**

*Securely mount and level the sensor as necessary.*



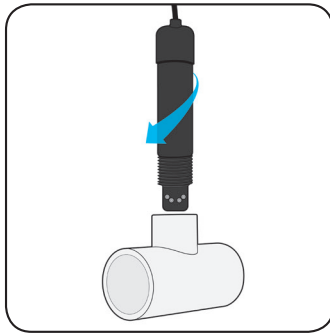
## **SRS Teflon® Diffuser**

*Securely mount and level the sensor as necessary.*



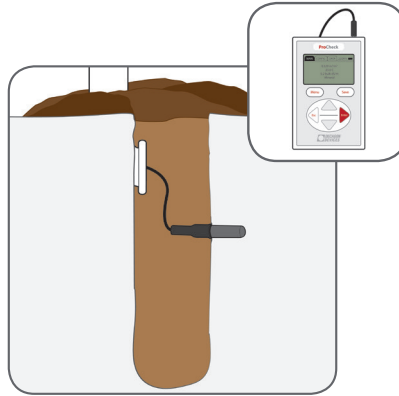
## **LWS**

*Secure sensor to plant ensuring the sensor face is parallel with the adjacent leaf surfaces.*



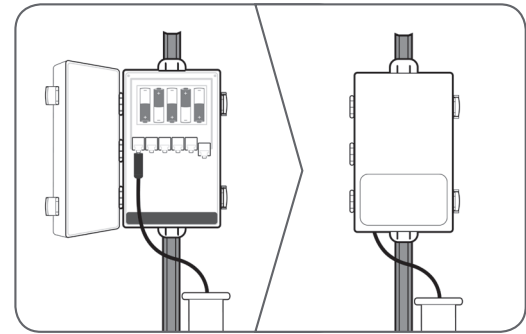
### **ES-2**

*Screw sensor into threaded pipe fitting.*



### **RT-1**

*Insert the sensor into undisturbed soil and use the optional ProCheck to make sure your sensor reads accurately.*



### **Plug in Sensor and Configure Logger**

*Always protect the cables with PVC casing above the ground surface. See next page for more details about configuring your sensor.*

# Logger Configuration

Configuring your logger in ECH20 Utility

Connected to Em50R:  
**EM6784**  
5/22/2014 8:35:01 AM

Connect Via:  
Direct on COM3 Decag

Disconnect Download Scan

Em50R Identity  
Name: EM6784  
Device ID: EM6784  
Firmware Version: Em50 2.18

Device Location  
Site Name:   
Latitude:  °  '  "   
Longitude:  °  '  "   
Time Zone: UTC-07

Communication Hardware Options  
Communications configured with these settings  
Radio Mode: Radio Off  
Channel: 0  
Sub Channel: 0  
Radio Firmware Version: 5000

Sensor Measurement  
Measurement Interval: Off (not logging)  
Data Storage: 0% in use

Port 1 Sensor: GS3 Moisture/Temp/EC  
Port 2 Sensor: GS1 Soil and Media Moisture  
Port 3 Sensor: STM Moisture/Temp  
Port 4 Sensor: None Selected  
Port 5 Sensor: None Selected  
Power Noise Filter: 60 Hz

Revert Apply

1 Pick your measurement interval

2 Select the sensor plugged into each port

3 Select "Apply" to save settings

### Configuring your logger in DataTrac 3

1 Select the sensor plugged into each port

2 Pick measurement intervals by selecting "Sensors and Measurements"

The screenshot shows the DataTrac 3 software interface. A 'Configure Device' dialog box is open, showing the configuration for a device. The 'Sensor Type' is set to 'G63 Moisture/Temp/EC' and the 'Sensor Label' is 'G63'. The dialog box also shows a list of sensors and measurements, including 'Volumetric Water Content', 'Temperature', 'Electrical Conductivity', 'Water Potential (kPa)', 'Temperature (°C)', and 'Irrigation (minutes on)'. The 'Chart Axis' section shows 'Volumetric Water Content (m³/m³)' and 'Water Potential (kPa)'. The 'Target Range' section is empty.

Chart Period:	All Data	Start:	05/Jan/2012	End:	12:00:00								
	P1 - m³/m³	P2 - dS/m	P3 - °C	P4 - m³/m³	P5 - dS/m	P6 - °C	P7 - m³/m³	P8 - dS/m	P9 - °C	P10 - kPa	P11 - °C	P12 - min	P13 - Switch
Avg	0.214	0.185	16.5	0.206	0.13	21.2	0.211	0.45	15.9	172.5	16.3	n/a	n/a
Min	-1.053	0.000	16.7	-1.044	0.01	9.8	-1.020	0.00	7.8	1197.3	15.7	n/a	n/a
Max	1.011	1.100	25.0	1.011	1.04	38.2	0.398	1.04	31.4	6.5	21.6	n/a	n/a
Total	n/a	n/a	n/a	n/a	n/a	n/a	n/a	n/a	n/a	n/a	n/a	21603	n/a
Event	n/a	n/a	n/a	n/a	n/a	n/a	n/a	n/a	n/a	n/a	n/a	796	n/a

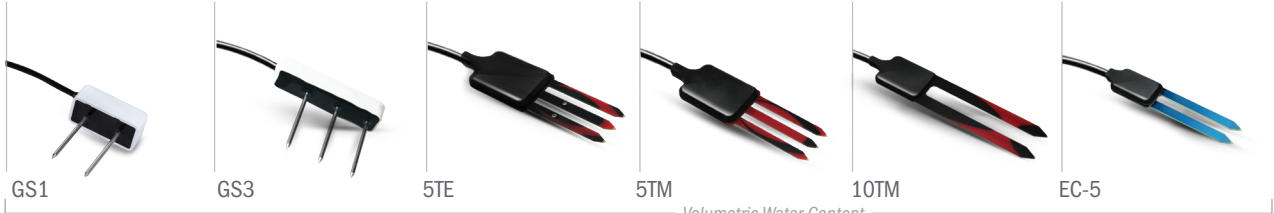
**FREE  
30 DAY  
TRIAL**  
[DECAGON.COM/DATATRAC3](http://DECAGON.COM/DATATRAC3)







# Related Products



GS1

GS3

5TE

5TM

10TM

EC-5

Electrical Conductivity      Temperature      Volumetric Water Content



MPS-2

Soil Matric Potential  
Temperature



MPS-6

Most Accurate



CTD Sensor

Water Depth, Temperature,  
Electrical Conductivity



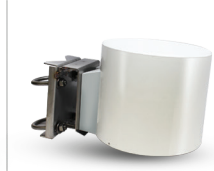
Drain Gauge

Deep Drainage Monitor



ECRN-50

Low-Resolution  
Rain Gauge



ECRN-100

High-Resolution  
Rain Gauge



Cup Anemometer  
Wind Speed, Direction



DS-2  
Sonic Anemometer, Wind  
Speed, Direction



PYR/QSO-S  
Total Solar Radiation,  
PAR Photon Flux



EM50 Logger Series  
Radio, Cellular, or Direct  
Connect Logger



ProCheck  
Sensor Read-Out and  
Storage System